



# Building a Best-in-class Urologic Oncology Company

Q3 2022

Technologies to better visualize and treat urologic cancers  
through minimally invasive procedures in the physicians' office

# Forward-Looking Statements

These materials may contain forward-looking statements relating to the business of Imagin Medical (the “Company” or “Imagin”) including with respect to the progress, timing and completion of the Company’s research, development, and clinical trials for product candidates, the Company’s ability to manufacture, market, commercialize, partner and achieve market acceptance for product candidates, its ability to protect its intellectual property and operate its business without infringing on the intellectual property rights of others, the Company’s estimates for future performance and its estimates regarding anticipated operating losses, future revenues, capital requirements, and its needs for additional financing, and any M&A timelines. Even if the Company’s actual results or development are consistent with the forward-looking statements contained in this presentation, those results or developments may not be indicative of the Company’s results or developments in the future. In some cases, you can identify forward-looking statements by words such as “could”, “should”, “may”, “expect”, “anticipates”, “believes”, “intends”, “estimates”, or similar words. These forward-looking statements are based largely on the Company’s current expectations as of the date of this presentation and are subject to a number of known and unknown risks and uncertainties and other factors that may cause actual results, performance, or achievements to be materially different from any future results, performance or achievements express or implied by these forward-looking statements. In particular, the Company’s expectations could be affected by, among other things, uncertainties involved in the development and manufacture of medical devices, unexpected results, unexpected regulatory actions or delays, competition in general, the Company’s ability to obtain or maintain patent or other proprietary intellectual property protection. In light of these risks and uncertainties, there can be no assurance that the forward-looking statements made during this presentation will, in fact, be realized, and no representation or warranty is given as to the completeness or accuracy of the forward-looking statements contain in these materials.

Imagin is providing the information in these materials as of this date, and we disclaim any intention or obligation to publicly update or revise any forward-looking statements, whether as a result of new information, future events, or otherwise.

**Building a best-in-class, urologic oncology company focused on improving physicians' ability to visualize and treat cancer during Minimally Invasive Surgery**

*Expanding access to hospitals and physicians' offices, improving patient care*

\* Imagin Medical, Inc. is a development stage company and does not currently have any Medical Device Regulatory Approvals or Clearances to market products in any jurisdiction.

## BLADDER CANCER

**i/Blue  
Imaging System**  
*Improves  
visualization*

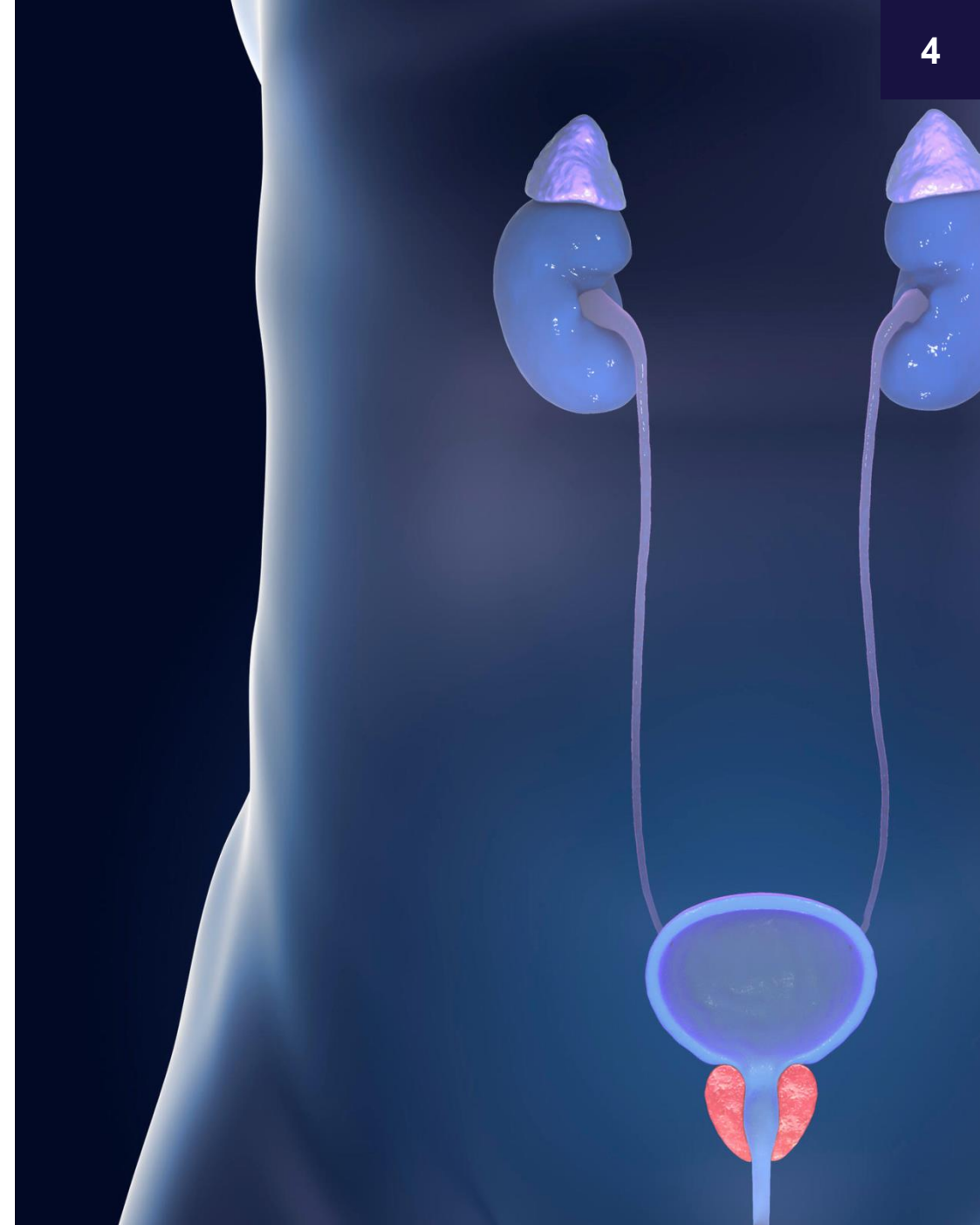
## PROSTATE CANCER

**enCAGE Coil  
Precision Ablation**  
*Preserves erectile  
nerves*

# Imagin Medical Today

## Breakthrough Oncology Technologies

- **i/Blue Imaging System for bladder cancer**  
Proprietary optics and light sensors greatly increases accuracy in visualizing bladder cancer for improved resection.
- **enCAGE Coil for prostate cancer**  
Bipolar, radio frequency-based probe enabling precise pre-set margins for focal therapy prostate cancer ablation.
- \$800M total market opportunity
- Well protected IP – 4 patents for bladder, 8 for prostate
- Strong Boston-based team that has done it before; this is an execution play
- World-class Scientific Advisory Board



1

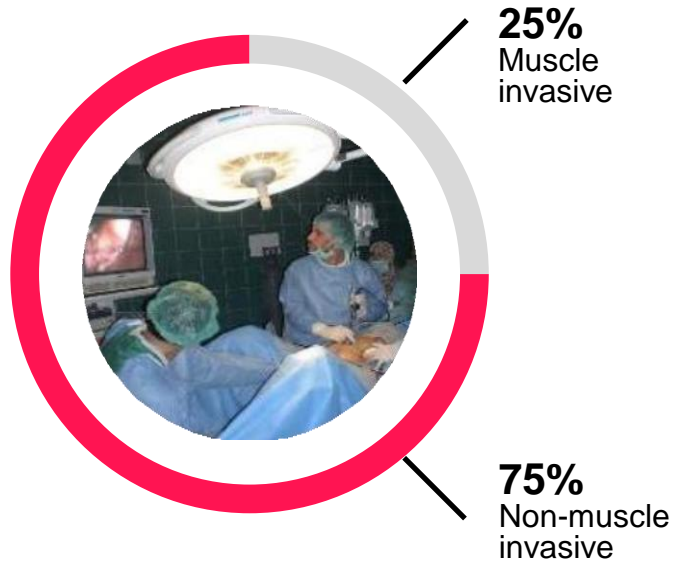
# Bladder Cancer

## i/Blue Imaging System



# Bladder Cancer

## Initial Target Market



- \$4B bladder cancer surveillance
- > 50% recurrence rate in non-muscle
- > 724,000 living in fear of recurrence
- 81,190 new cases/year; 17,240 deaths\*

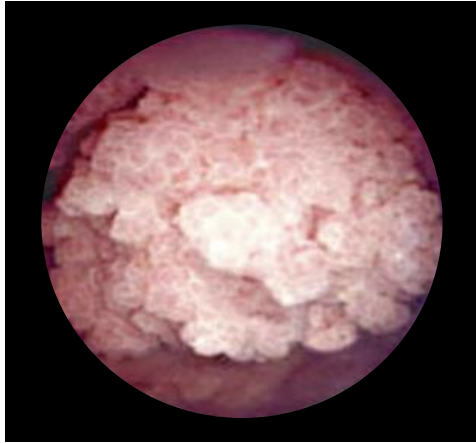
Bladder cancer is  
the **6<sup>th</sup> most**  
**prevalent cancer**  
in the U.S.

**Most expensive**  
cancer to treat

# Current Standard of Care – White Light

Significant Unmet Medical Need Remains

## White Light



*Tumor visible  
above organ wall*

- Highly effective for visualizing cancerous tumors that protrude above the bladder wall

## Limitations of White Light

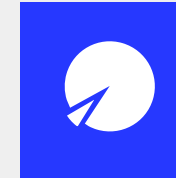


*Flat tumors  
not visible*

- Flat tumors may look the same as normal tissue
- Not effective in visualizing the margins of the tumor



**30-year-old**  
technology



**~95%**  
of market today

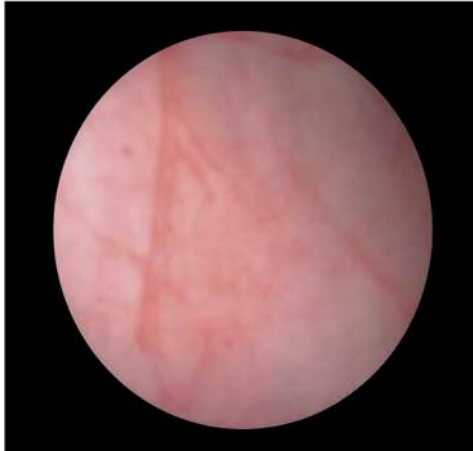


**>50%**  
recurrence rate  
in non-muscle

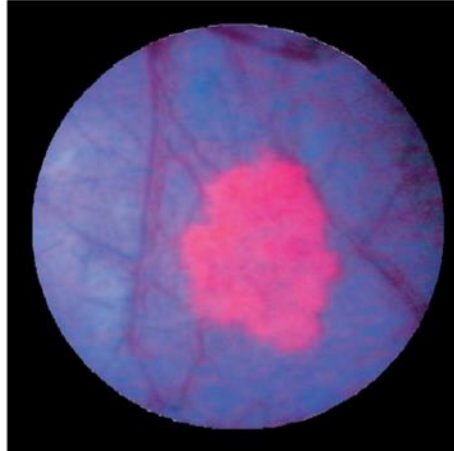
# Promising New Modality – Blue Light

Contrast Agents with Blue Filter over White Light, Fluorescence

White Light



Blue Light



## Key Message: Market Development Underway

- Published data supports 25% more tumors, 33% more carcinoma in situ (CIS) found
- Blue light added to American Urology Association (AUA) Guidelines
- Re-imbbursement codes in place

## Current Product:

- Photocure - *Imaging Agent*
- Karl Storz - *Light System*

## Benefits:

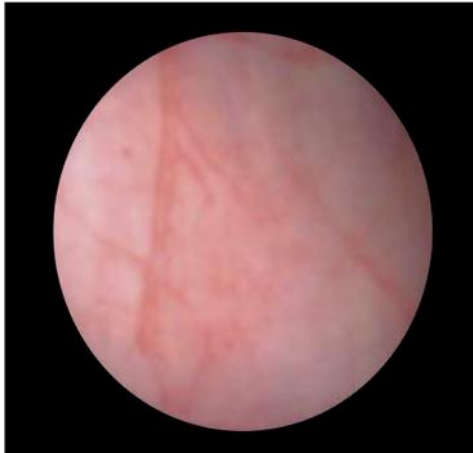
- Blue Light – excites fluorescence in the tumor, highlighting the cancerous tissue
- Easier to detect flat cancers and visualize margins



# The Challenges: Today's Blue Light

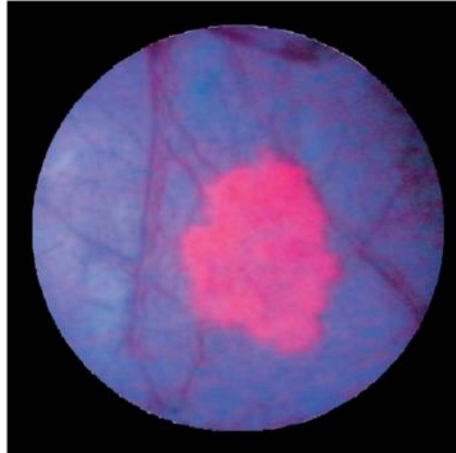
Lack of Dual Images and Scope Compatibility

**White Light**



*White light image shows the full landscape of the bladder... but does not highlight cancer*

**Blue Light**



*Blue light, excellent job highlighting cancerous tissues in the bladder*



## Limitations

- Surgeons cannot operate using the blue light image
- Blue image not in real-time, may lose orientation in bladder
- Surgeon must manually "switch" between two different images
- Today's blue light available from only one manufacturer and is not compatible with other endoscopes on the market

# i/Blue System Control Unit

## State-of-the-art Key Components



## Functions

- Dual wavelength light source, two-channel camera control unit, data recorder and power supply
- Illuminates the interior of the bladder with white and blue light simultaneously
- Ease of use

# Dual View Camera Head

## State-of-the-art Key Components



## Functions

- Sophisticated optical filters split the image into white light and blue light channels
- Displays simultaneous, side-by-side white and blue light on the surgical monitor – in real time
- Designed to work with most endoscopes on the market
- Ease of Use

# Solution: i/Blue™ Imaging System\*

## i/Blue Value Proposition



## Improves Surgical Technique

### Simultaneous side-by-side images

- No switching back and forth / shows cancer in context
- Enables surgeon to better visualize and resect the cancer

### DV Camera Head - system compatibility

- Attaches to most endoscopes on the market, allowing hospitals to use equipment they already own saving cost

### Makes BLC practical and more accessible

- Dramatically expands the market

2

# Prostate Cancer

## enCAGE Coil for Precision Ablation



# Prostate Cancer

## Market Information

- 1 out of 7 men will be diagnosed
- 3.1M living with prostate cancer
- 248,530 new cases/year
- 314,130 deaths\*
- \$1.2B prostate cancer cost to Medicare

Prostate Cancer  
most prevalent\*  
cancer in men in  
the U.S.

**Number 1** cancer  
deaths for men

### Today's Procedures



#### Surgery

- Radical Prostatectomy
  - Five different procedures
  - Robotic most popular
  - Side effects
    - Urinary incontinence
    - Erectile dysfunction



#### Radiation

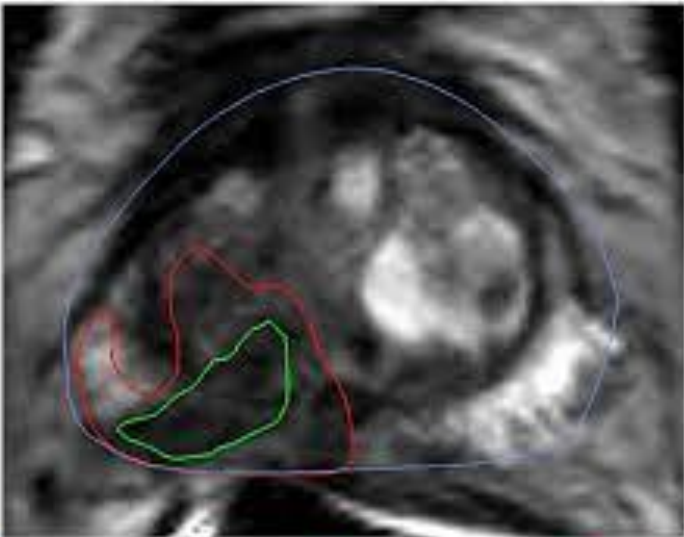
- External beam
- Brachy Therapy
- Side effects similar to above

### Emerging Procedure

- **Focal Therapy** - Fuses MRI with Ultrasound Images
  - Minimal Invasive procedure
  - Preserves the prostate
  - Targets only the tumor
  - Greatly reduces the risk of impaired urinary and sexual function compared to radical surgery
  - Performed in physicians' offices
  - Shorter recovery time

# Focal Therapy

Emerging treatment



■ Prostate Capsule ■ MRI Target ■ Tumor

## Fuses MRI with Ultrasound Images

- Minimal Invasive procedure
- Targets only the tumor
- Greatly reduces the risk of impaired urinary and sexual function compared to radical surgery
- Performed in physicians' offices
- Shorter recovery time

# Today's Focal Therapy Modalities

## Thermal Therapies

### Primary Therapies



#### Freezing

- Cryotherapy



#### Heating

- HIFU - High-intensity Focused Ultrasound
- Single electrode radiofrequency
- Laser
- Water/Steam



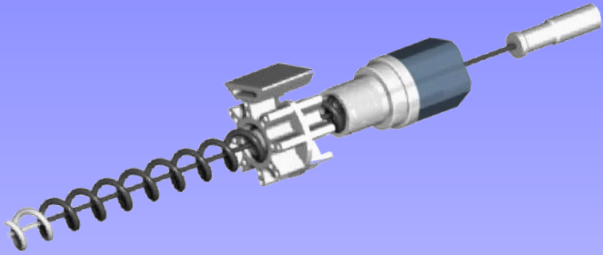
### Challenges

- Lesion grows from the center outward
- Difficulty controlling the treatment energy to stay within the margins of the tumor
- Ablation often extends beyond the tumor in order to ensure complete cancer ablation
- Important structures, often immediately adjacent to tumors, are therefore hard to preserve, e.g., erectile nerves

# enCAGE Coil Precision Ablation System

Bipolar Radio Frequency-based

## Electrode/Accessories



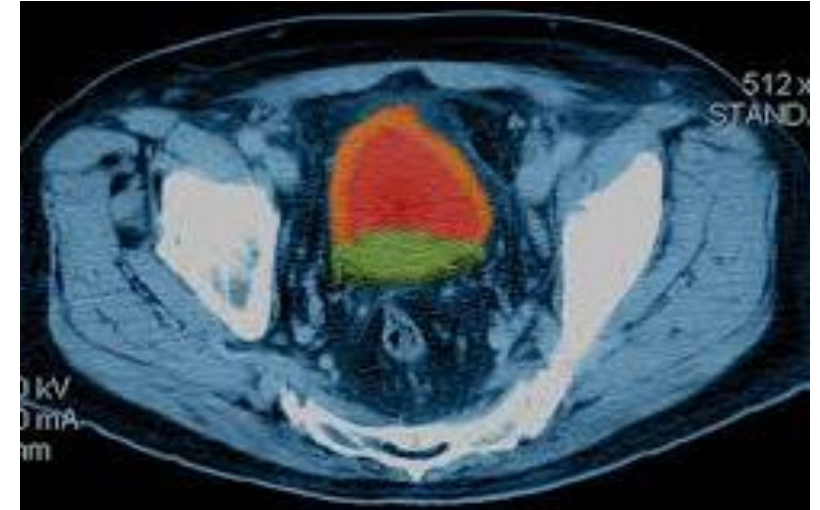
- Electrodes, Needle Introducer and Template
- Sterile single-use

## Radio Frequency Generator



- Enables pre-programmed RF output
- Automated control based on impedance monitoring

## Navigation/Planning



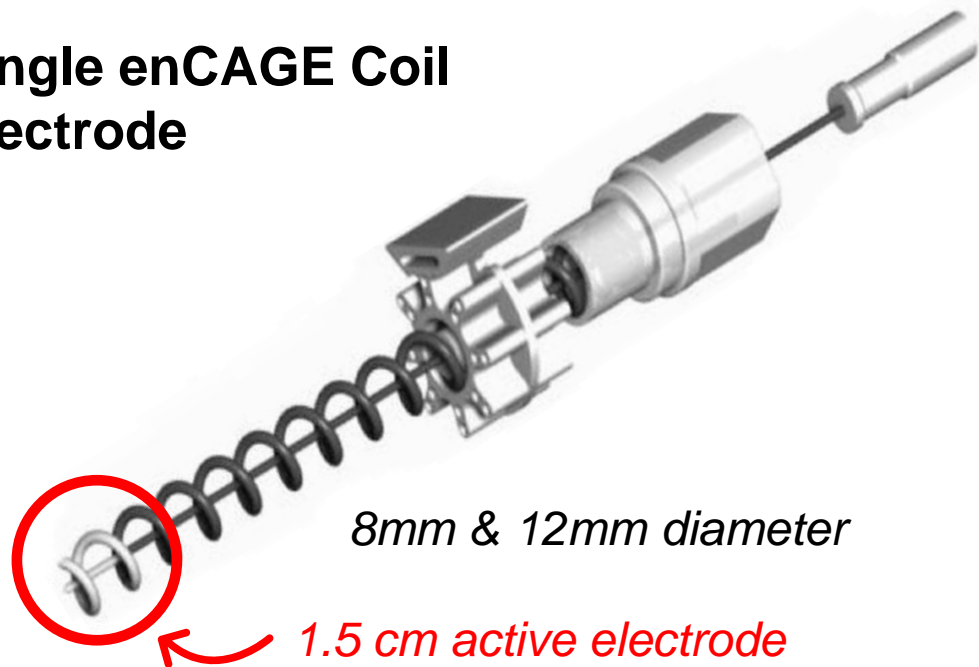
- Works with current systems on market



## enCAGE Coil Disposable Kit

Electrodes, Introducer and Guide Template

### Single enCAGE Coil Electrode

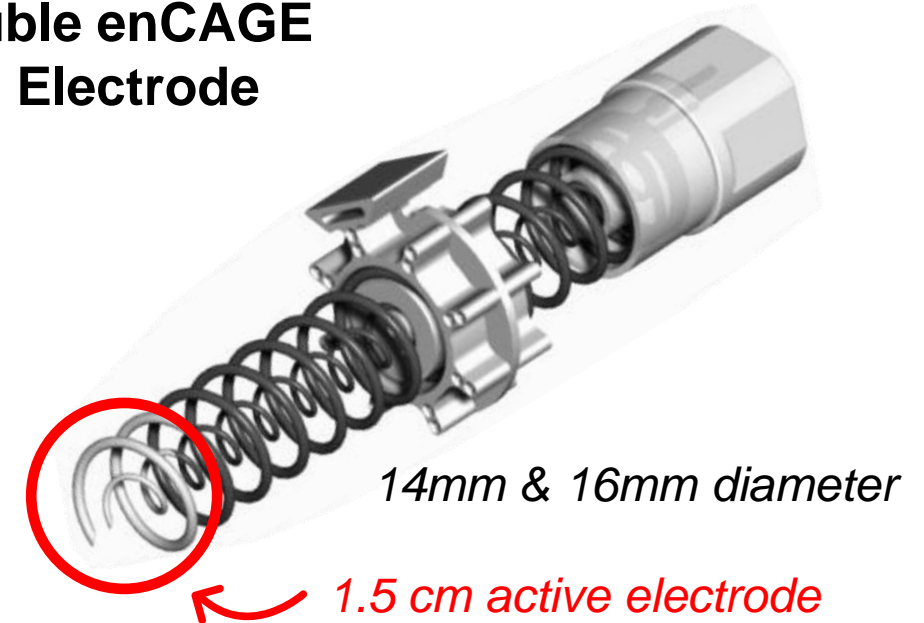


### Introducer:



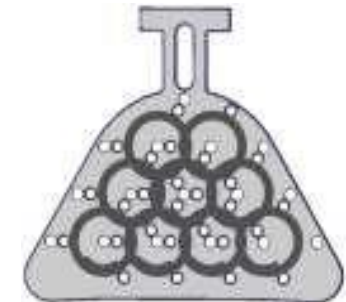
Enables better targeting of enCAGE Coil electrode

### Double enCAGE Coil Electrode



### Guide Template:

Facilitates movement of electrode enCAGE Coil from ablation to ablation



# enCAGE Coil Precision Ablation System

## Tissue-Sparing Prostate Ablation

### Office-based Targeted and Controlled Focal Therapy

- Technology keeps the RF energy within the enCAGE Coil electrode or “cage”, so the location of ablation is highly controlled
- Allows physicians to pre-set exact margins for ablating prostate cancer lesions that often overlay the erectile nerves
- 8 issues patents

*TSPA's\* enCAGE Coil generates a Faraday Cage effect, preventing damage to surrounding tissues*

### Faraday Cage Effect



# enCAGE Coil System

## RF Generator and Navigation System

### enCAGE Coil RF Generator

- Custom RF energy source
- Fully automated, less dependent on procedure room operator
- Enables multiple pre-programmed settings, including power, time and impedance

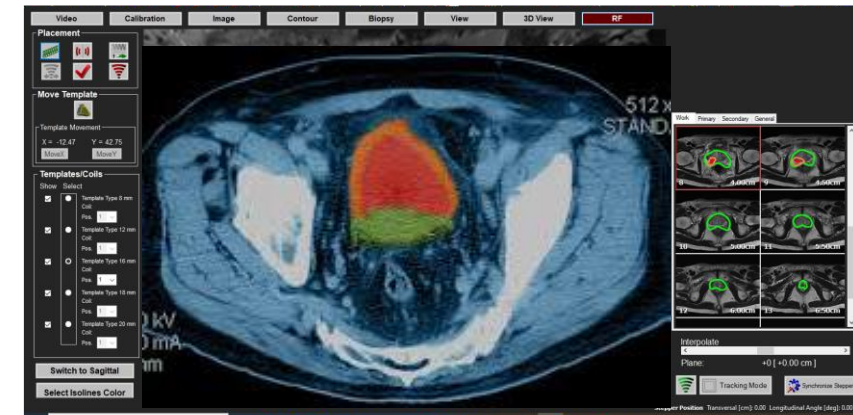
RF Generator



Navigation System

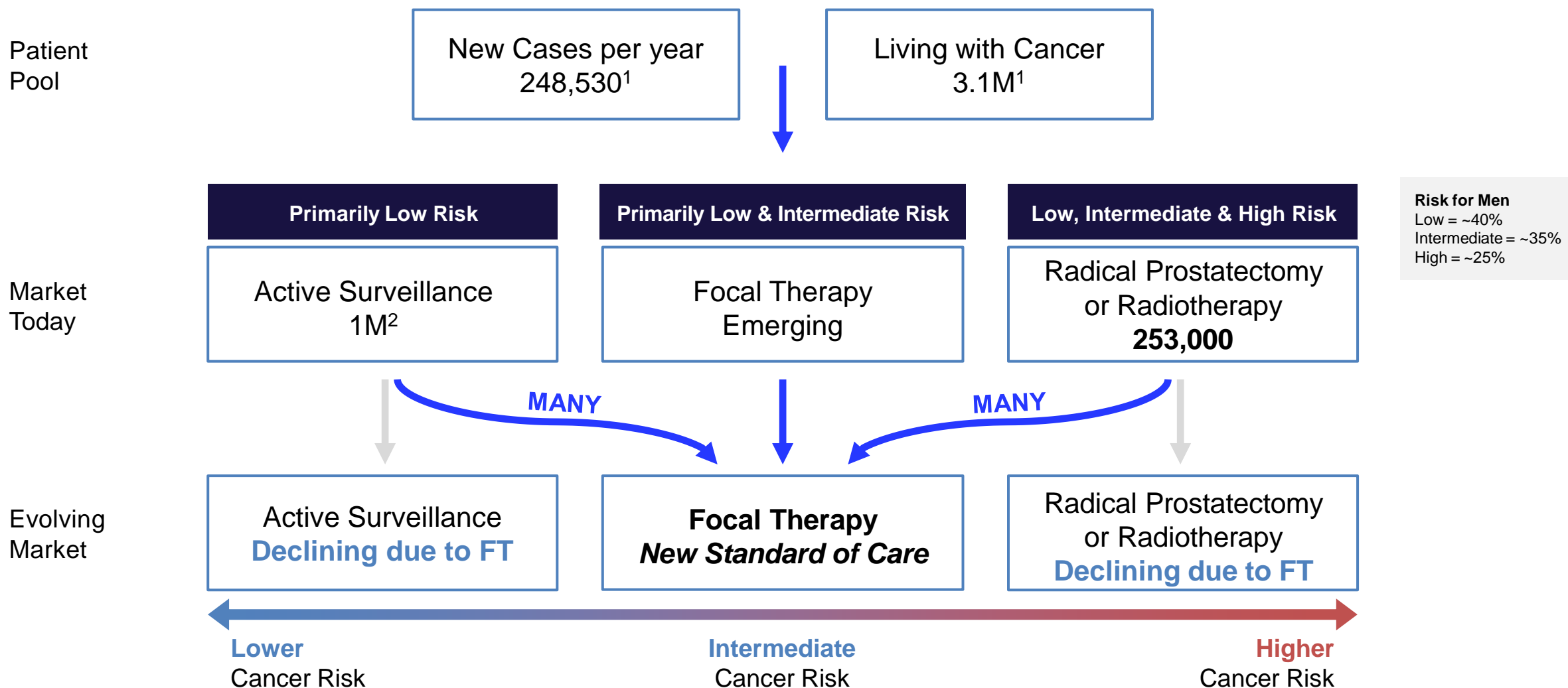
### Navigation System

- Performs the fusion operation
- Compatible with current systems on the market
- Enables accurate tumor visualization



# U.S. Prostate Market Trends

enCAGE Coil Precision Ablation Will Expand the Market



# Imagin Medical enCAGE Coil

## Where We Are Today

- FDA 510(k) cleared for general ablation of soft tissue
- Two clinical studies have been completed using current device for to ablate prostate tissue
  - 41 patients evaluated that showed negative biopsy results in 71-80% of subjects within six months following treatment. Results of the London College study were published Journal of Urology, May 2018
  - Evaluated by high profile key opinion leaders
  - Dr. Samir Taneja, NYU/Langone MC
  - Dr. Mark Emberton, London College
  - Dr. Clement Orczyk
- Product enhancements under development



3

# Corporate Summary

# Financial Highlights

## Liquidity and Share Capital

Stock Exchanges

OTCQB: **IMEXF** CSE: **IME**

### Imagin Medical Cap Table

Share Class (as of 04/11/2021)	# of Shares
Common Shares	9,996,876
Warrants Outstanding*	29,276,250
Options Outstanding	6,519,789
<b>Fully Diluted Shares Outstanding</b>	<b>45,792,915</b>
Inside Ownership	
Shares Held By Insiders	1,199,398
Insider Ownership % of Shares Outstanding	12%

#### US \$ Equivalents

\* Oct 2025 - Feb 2026: 2,706,875 @0.50 USD = \$1.35M USD

\* Oct 2025 - Feb 2026: 2,706,875 @0.60 USD = \$1.6M USD

\* Sep 2026: 15,775,000 @0.40 USD = \$6.3M USD

\* Apr 2027: 6,250,000 @0.40 USD = \$2.5M USD



# Thank You!

## CONTACT INFORMATION:

**Jim Hutchens**

President & CEO

(617) 571-6006

[jhutchens@imaginmedical.com](mailto:jhutchens@imaginmedical.com)

**John Vacha**

CFO

(617) 448-8379

[jvacha@imaginmedical.com](mailto:jvacha@imaginmedical.com)