



# Visualizing Cancer In A Different Light

**INVESTOR PRESENTATION**

Q1 2022

# Forward-Looking Statements

These materials may contain forward-looking statements relating to the business of Imagin Medical (the “Company” or “Imagin”) including with respect to the progress, timing and completion of the Company’s research, development, and clinical trials for product candidates, the Company’s ability to manufacture, market, commercialize, partner and achieve market acceptance for product candidates, its ability to protect its intellectual property and operate its business without infringing on the intellectual property rights of others, the Company’s estimates for future performance and its estimates regarding anticipated operating losses, future revenues, capital requirements, and its needs for additional financing, and any M&A timelines. Even if the Company’s actual results or development are consistent with the forward-looking statements contained in this presentation, those results or developments may not be indicative of the Company’s results or developments in the future. In some cases, you can identify forward-looking statements by words such as “could”, “should”, “may”, “expect”, “anticipates”, “believes”, “intends”, “estimates”, or similar words. These forward-looking statements are based largely on the Company’s current expectations as of the date of this presentation and are subject to a number of known and unknown risks and uncertainties and other factors that may cause actual results, performance, or achievements to be materially different from any future results, performance or achievements express or implied by these forward-looking statements. In particular, the Company’s expectations could be affected by, among other things, uncertainties involved in the development and manufacture of medical devices, unexpected results, unexpected regulatory actions or delays, competition in general, the Company’s ability to obtain or maintain patent or other proprietary intellectual property protection. In light of these risks and uncertainties, there can be no assurance that the forward-looking statements made during this presentation will, in fact, be realized, and no representation or warranty is given as to the completeness or accuracy of the forward-looking statements contain in these materials.

Imagin is providing the information in these materials as of this date, and we disclaim any intention or obligation to publicly update or revise any forward-looking statements, whether as a result of new information, future events, or otherwise.

# Imagin Medical

Surgical Imaging Company

## **Dramatically improve physicians' ability to visualize cancer during Minimally Invasive Surgery (MIS)**

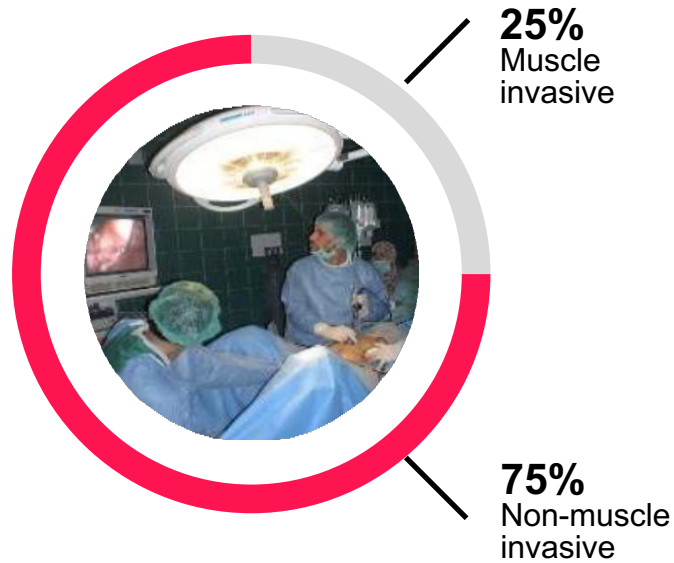
- Breakthrough imaging technology
- Initial target - \$400M bladder cancer market
- Functional products built; development risk mitigated
- Regulatory plan in place - meetings with FDA underway
- Well protected IP - 3 key patents issued
- Boston-based team that has done it before
- World-class Scientific Advisory Board





# Bladder Cancer

## Initial Target Market



- \$4B bladder cancer surveillance
- > 50% recurrence rate in non-muscle
- > 724,000 living in fear of recurrence
- 81,190 new cases/year; 17,240 deaths\*

\* American Cancer Society: [Key Statistics for Bladder Cancer](#); Last Revised: January 4, 2018

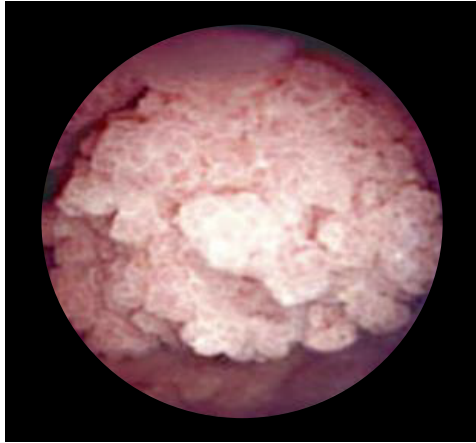
Bladder cancer is the  
6<sup>th</sup> most prevalent  
cancer in the U.S.

Most expensive  
cancer to treat

# Current Standard of Care – White Light

Significant Unmet Medical Need Remains

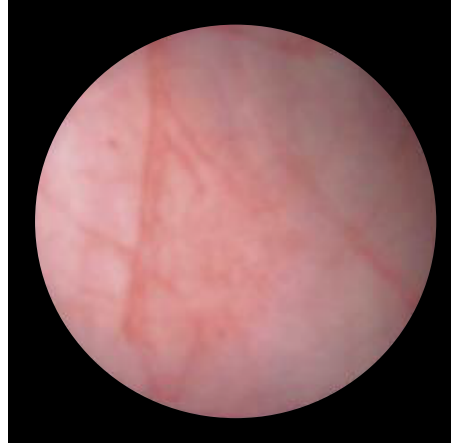
## White Light



*Tumor visible  
above organ wall*

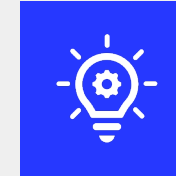
- Highly effective for visualizing cancerous tumors that protrude above the bladder wall

## Limitations of White Light

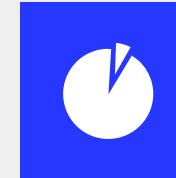


*Flat tumors  
not visible*

- Flat tumors may look the same as normal tissue
- Not effective in visualizing the margins of the tumor



**30-year-old**  
technology



**~95%**  
of market today

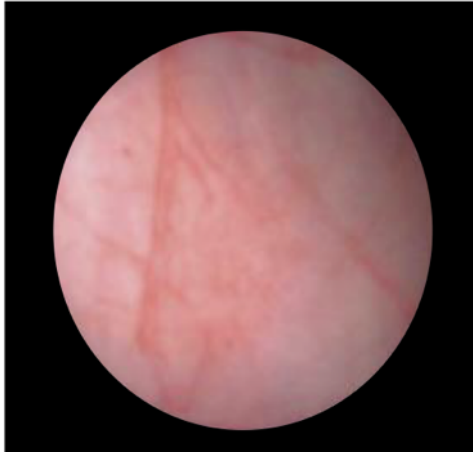


**>50%**  
recurrence rate  
in non-muscle

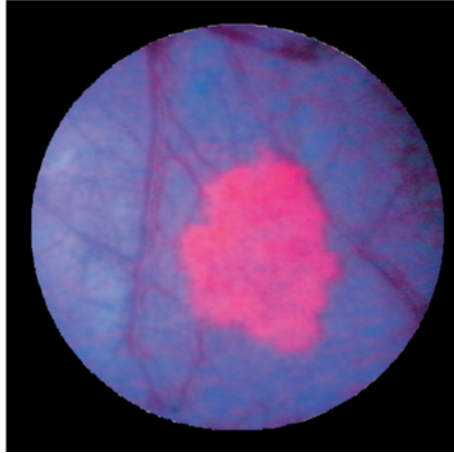
# Promising New Modality – Blue Light

Contrast Agents with Blue Filter over White Light, Fluorescence

**White Light**



**Blue Light**



## Benefits:

- Blue Light – excites fluorescence in the tumor, highlighting the cancerous tissue
- Easier to detect flat cancers and visualize margins

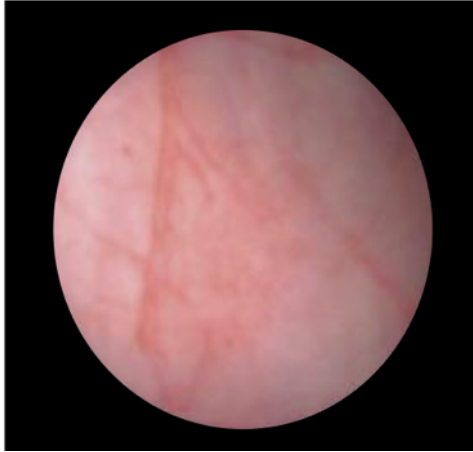
## Key Message: Market Development Underway

- Published data supports 25% more tumors, 33% more carcinoma in situ (CIS) found
- Blue light added to American Urology Association (AUA) Guidelines
- Re-imbbursement codes in place

# The Challenges: Today's Blue Light

Limited features

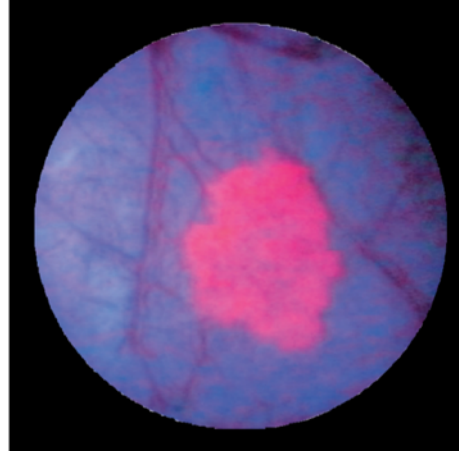
*White Light*



White light image shows the full landscape of the bladder... but does not highlight cancer



*Blue Light*



*Blue light, excellent job highlighting cancerous tissues in the bladder*

## Limitations

- Surgeons cannot operate using the blue light image
- Blue image not in real-time, may lose orientation in bladder
- Surgeon must manually “switch” between two different images
- Today's blue light available from only one manufacturer and is not compatible with other endoscopes on the market



# i/Blue System Control Unit

## State-of-the-art Key Components



## Functions

- Dual wavelength light source, two-channel camera control unit, data recorder and power supply
- Illuminates the interior of the bladder with white and blue light simultaneously
- Ease of use



# Dual View Camera Head

## State-of-the-art Key Components



## Functions

- Two cameras with sophisticated optical filters split the image into white light and blue light channels
- Displays simultaneous, side-by-side white and blue light on the surgical monitor – in real time
- Designed to work with most endoscopes on the market
- Ease of Use

# Focus Groups, User Needs/Product Validated

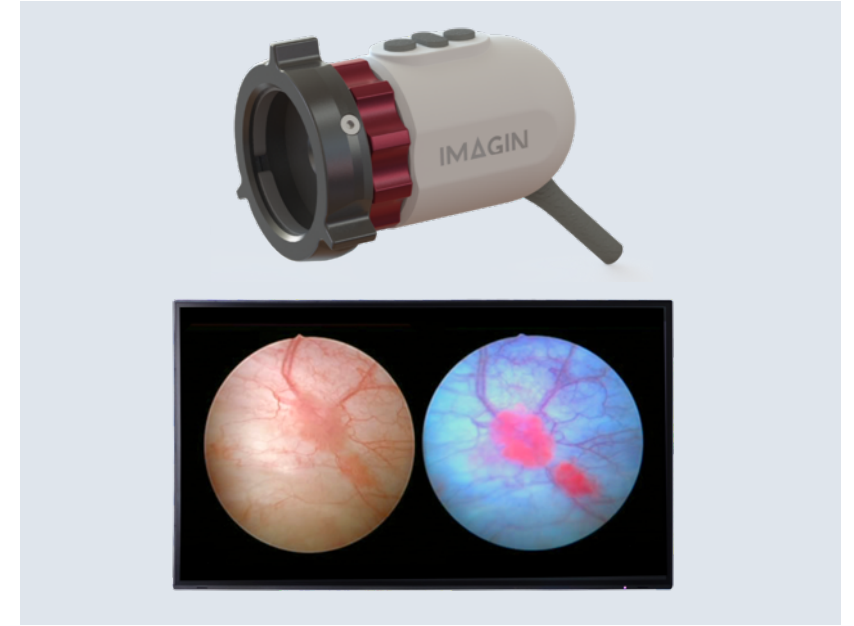
American Urology Association Annual Meeting



*Meetings with Clinical  
Opinion Leaders*



*System Control Unit*



*Dual View Camera*

# Solution: i/Blue™ Imaging System\*

Making BLC Practical and More Accessible



## i/Blue Value Proposition

- **Simultaneous side-by-side images**
  - No switching back and forth / shows cancer in context
  - Enables surgeon to better visualize and resect the cancer
- **DV Camera Head - system compatibility**
  - Attaches to most endoscopes on the market, allowing hospitals to use equipment they already own saving cost
- **Makes BLC practical and more accessible**
  - State-of-the art technology at a lower price
  - Dramatically expands the market

\* Imagin Medical, Inc. is a development stage company and does not currently have any Medical Device Regulatory Approvals or Clearances to market products in any jurisdiction.

# Strong M&A Environment

If You Can't Beat Them, Buy Them



**NOVADAQ**

## PINPOINT

- Introduced Q4, 2007
- White light + ICG fluorescence endoscopic system
- Visualization of blood flow and tissue perfusion during surgery
- Ability to **overlay/combine** white light and fluorescence imaging in real time



**stryker**<sup>®</sup>

## System 1588

- Introduced Q1, 2016
- White light + ICG fluorescence endoscopic system
- Visualization of blood flow and tissue perfusion during surgery
- Surgeons need to **toggle** back and fourth between white light and fluorescence image

**June 2017**

**“Stryker Corp. to acquire Novadaq Technologies for \$701 million”**



# Financial Highlights

## Liquidity and share capital

Stock Exchanges   OTCQB: **IMEXF**   CSE: **IME**

### Current Share Structure

Share Class (as of 03/23/2021)	# of Shares
Common Shares	9,067,186
Warrants Outstanding*	1,966,790
Options Outstanding	535,000
<b>Fully Diluted Shares Outstanding</b>	<b>11,568,976</b>

### Inside Ownership

Shares Held by Insiders	515,417
Insider Ownership	5.78%



## In Summary

Key Investment Risks Removed, High Investment Return

### Innovation changes medical practice

Medical markets evolve when advanced technology becomes available, physicians recognize the need for improvement and patients demand it.

**White Light**



**Today's Blue Light**



**i/Blue Imaging System**



**Disruptive  
Imaging  
Technology**

**Mitigated  
R&D Risk**

**Experienced  
Management  
Team**

**Strong  
M&A Market**

# Thank You!

## CONTACT INFORMATION:

**Jim Hutchens**

President & CEO

(617) 571-6006

[jhutchens@imaginmedical.com](mailto:jhutchens@imaginmedical.com)

**John Vacha**

CFO

(617) 448-8379

[jvacha@imaginmedical.com](mailto:jvacha@imaginmedical.com)