

# IMAGIN

MEDICAL

**Investor Presentation**  
Q2 2021

**Game Changing**  
Cancer Care

IMAGIN

CSE: IME | OTCQB: IMEXF | Frankfurt & Stuttgart Symbol: DPD2

# Forward-Looking Statements

These materials may contain forward-looking statements relating to the business of Imagin Medical (the “Company” or “Imagin”) including with respect to the progress, timing and completion of the Company’s research, development, and clinical trials for product candidates, the Company’s ability to manufacture, market, commercialize, partner and achieve market acceptance for product candidates, its ability to protect its intellectual property and operate its business without infringing on the intellectual property rights of others, the Company’s estimates for future performance and its estimates regarding anticipated operating losses, future revenues, capital requirements, and its needs for additional financing, and any M&A timelines. Even if the Company’s actual results or development are consistent with the forward-looking statements contained in this presentation, those results or developments may not be indicative of the Company’s results or developments in the future. In some cases, you can identify forward-looking statements by words such as “could”, “should”, “may”, “expect”, “anticipates”, “believes”, “intends”, “estimates”, or similar words. These forward-looking statements are based largely on the Company’s current expectations as of the date of this presentation and are subject to a number of known and unknown risks and uncertainties and other factors that may cause actual results, performance, or achievements to be materially different from any future results, performance or achievements express or implied by these forward-looking statements. In particular, the Company’s expectations could be affected by, among other things, uncertainties involved in the development and manufacture of medical devices, unexpected results, unexpected regulatory actions or delays, competition in general, the Company’s ability to obtain or maintain patent or other proprietary intellectual property protection. In light of these risks and uncertainties, there can be no assurance that the forward-looking statements made during this presentation will, in fact, be realized, and no representation or warranty is given as to the completeness or accuracy of the forward-looking statements contain in these materials.

Imagin is providing the information in these materials as of this date, and we disclaim any intention or obligation to publicly update or revise any forward-looking statements, whether as a result of new information, future events, or otherwise.

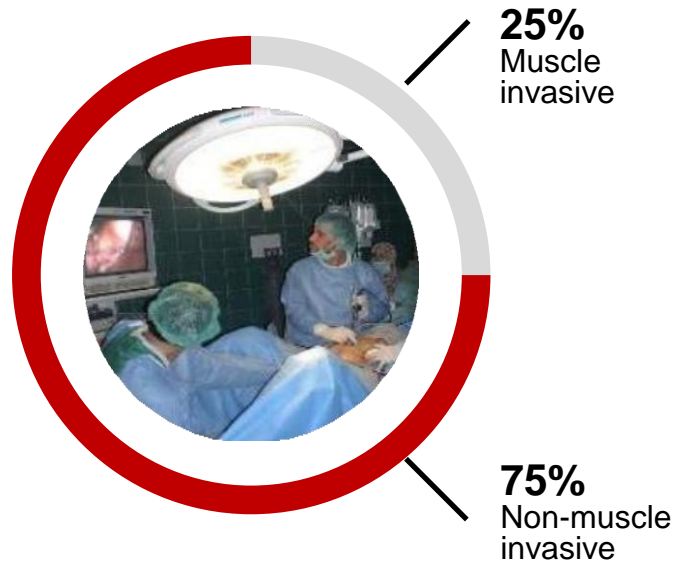
## **Dramatically improve physicians' ability to visualize cancer during Minimally Invasive Surgery (MIS)**

- Breakthrough technology, works with an FDA approved imaging agent
- Initial target - \$400M bladder cancer market - a “hot-button” urology issue looking for innovation
- Development risk mitigated; functional products built
- Regulatory plan in place - meetings with FDA underway
- Well protected IP - 3 key patents issued
- Strong Boston-based team that has done it before; this is an execution play
- World-class Scientific Advisory Board



# Bladder Cancer

## Initial Target Market



- \$4B bladder cancer surveillance
- > 50% recurrence rate in non-muscle
- > 724,000 living in fear of recurrence
- 81,190 new cases/year; 17,240 deaths\*

\* American Cancer Society: [Key Statistics for Bladder Cancer](#); Last Revised: January 4, 2018

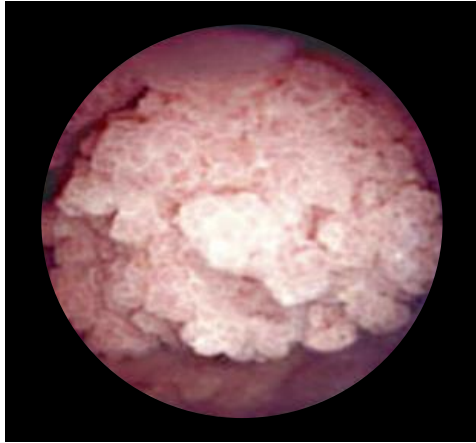
Bladder cancer is the  
6<sup>th</sup> most prevalent  
cancer in the U.S.

Most expensive  
cancer to treat

# Current Standard of Care – White Light

Significant Unmet Medical Need Remains

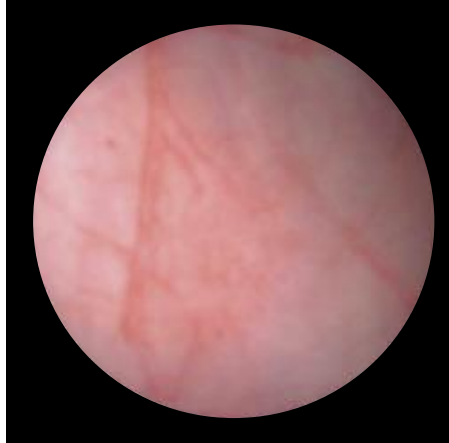
## White Light



*Tumor visible  
above organ wall*

- Highly effective for visualizing cancerous tumors that protrude above the bladder wall

## Limitations of White Light

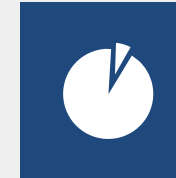


*Flat tumors  
not visible*

- Flat tumors may look the same as normal tissue
- Not effective in visualizing the margins of the tumor



**30-year-old**  
technology



**~95%**  
of market today

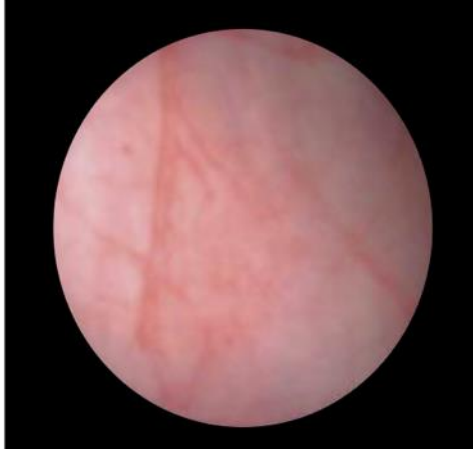


**>50%**  
recurrence rate  
in non-muscle

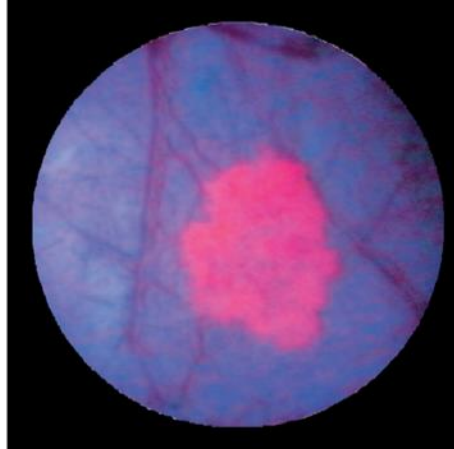
# Promising New Modality – Blue Light

Blue Light with Fluorescing Contrast Agent

**White Light**



**Blue Light**



## Benefits:

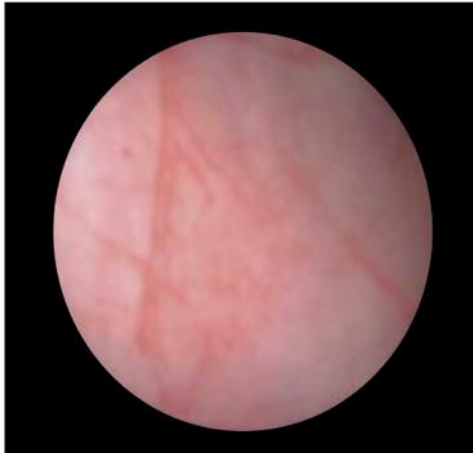
- Blue Light – excites fluorescence in the tumor, highlighting the cancerous tissue
- Easier to detect flat cancers and visualize margins - 25% more tumors found

Recommended by American Urology Association (AUA) Guidelines

# The Challenges: Today's Blue Light

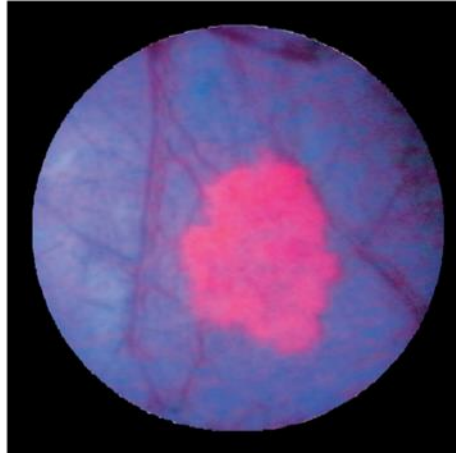
## Lack of Dual Images and Scope Compatibility

**White Light**



*White light image shows the full landscape of the bladder... but does not highlight cancer*

**Blue Light**



*Blue light, excellent job highlighting cancerous tissues in the bladder*



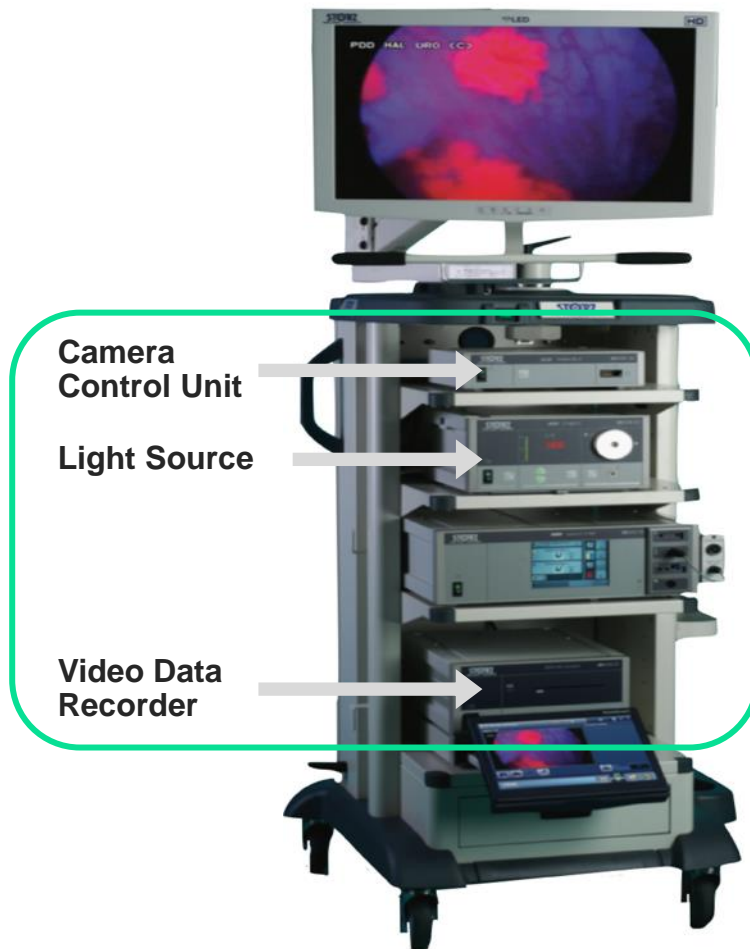
## Limitations

- Surgeons cannot operate using the blue light image
- Blue image not in real-time, may lose orientation in bladder
- Surgeon must manually "switch" between two different images
- Today's blue light available only one manufacturer and is not compatible with other endoscopes on the market

# Imagin i/Blue Imaging System

## Corrects Limitations of Today's Blue Light

### Today's Blue Light Equipment



=

### i/Blue Imaging System



### Key Message

- Improved surgical technique
  - Patented simultaneous acquisition of dual imaging
- Financial Benefits
  - State-of-the art technology at a lower price
  - Compatible with most scopes on the market

# i/Blue System Control Unit

## State-of-the-art Key Components



### Functions

- Dual wavelength light source, two-channel camera control unit, data recorder and power supply
- Illuminates the interior of the bladder with white and blue light simultaneously
- Ease of use

# Dual View Camera Head

## State-of-the-art Key Components



### Functions

- Two cameras with sophisticated optical filters split the image into white light and blue light channels
- Displays simultaneous, side-by-side white and blue light on the surgical monitor – in real time
- Designed to work with most endoscopes on the market



# Focus Groups, User Needs/Product Validated

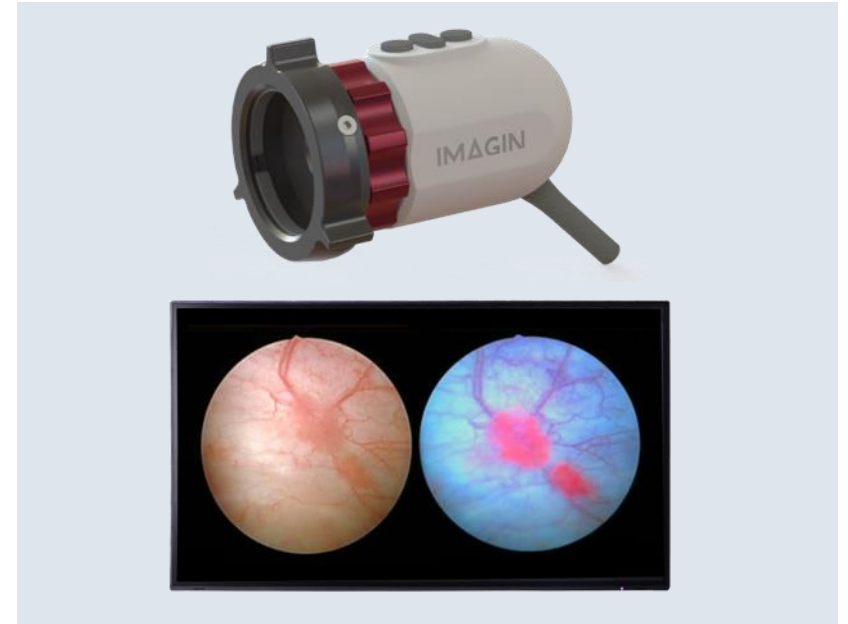
## American Urology Association Annual Meeting



*Meetings with Clinical  
Opinion Leaders*



*System Control Unit*



*Dual View Camera*

# Solution: i/Blue™ Imaging System\*

Making BLC Practical and More Accessible



## i/Blue Value Proposition

- **Simultaneous side-by-side images**
  - No switching back and forth / shows cancer in context
  - Enables surgeon to better visualize and resect the cancer
- **DV Camera Head - system compatibility**
  - Attaches to most endoscopes on the market, allowing hospitals to use equipment they already own saving cost
- **Makes BLC practical and more accessible**
  - State-of-the art technology at a lower price
  - Dramatically expands the market

# Building Imagin Medical

## To Success



### **On-Going Development**

Expansion/multiple MIS procedures, accommodates multiple contrast agents, i/Vision combines multiple illumination sources



### **Well Protected Intellectual Property**

4 key issued and pending patents



### **Growth Strategy**

Bladder cancer surgery – Bladder cancer fluorescence imaging biopsy. Immediate credibility, independent Sales Reps, expand to laparoscopic surgery

# Strong M&A Environment

If You Can't Beat Them, Buy Them



**NOVADAQ**

## PINPOINT

- Introduced Q4, 2007
- White light + ICG fluorescence endoscopic system
- Visualization of blood flow and tissue perfusion during surgery
- Ability to overlay/combine white light and fluorescence imaging in real time



**stryker**<sup>®</sup>

## System 1588

- Introduced Q1, 2016
- White light + ICG fluorescence endoscopic system
- Visualization of blood flow and tissue perfusion during surgery
- Surgeons need to toggle back and forth between white light and fluorescence image

June 2017: “Stryker Corp. to acquire Novadaq Technologies for \$701 million”

# In Summary

Key Investment Risks Removed, High Investment Return

## Innovation changes medical practice

Medical markets evolve when advanced technology becomes available, physicians recognize the need for improvement and patients demand it.

White Light



Today's Blue Light



i/Blue Imaging System



Disruptive  
Imaging  
Technology

Mitigated  
R&D Risk

Experienced  
Management  
Team

Strong  
M&A Market

# Thank You!

## CONTACT INFORMATION:

### **Jim Hutchens**

President & CEO

(617) 571-6006

[jhutchens@imaginmedical.com](mailto:jhutchens@imaginmedical.com)

### **John Vacha**

CFO

(617) 448-8379

[jvacha@imaginmedical.com](mailto:jvacha@imaginmedical.com)

